

# 5A Days 1-7 Review Test Score Card

SCORE

\_\_\_/50

A. Complete the sentences.

USE THESE WORDS:

black eye

calories

running late

worked as

credit score

laptop

scholarship

- +1 1. I won a \$2,000 scholarship. I used it for books and tuition.
- +1 2. A laptop is usually more expensive than a desktop.
- +1 3. How many calories are in a can of soda?
- +1 4. He got a black eye while playing basketball.
- +1 5. I've had a lot of jobs. I've worked as a cook. I've painted houses. And I've driven a taxi.
- +1 6. You almost never call in when you're running late. Please call in next time.
- +1 7. My credit score is 800. I always pay my bills on time.

B. Circle the answers. (+1 pt per circle)

- +1 1. The bank gave \_\_\_\_\_ a student loan. I'll pay it off after I finish school.  
a. my                      b. I                      **c. me**
- +1 2. Which is \_\_\_\_\_ comfortable: a backpack or a messenger bag?  
**a. more**                      b. the most                      c. morer
- +1 3. A slice of pizza has \_\_\_\_\_ fat. It's the cheese.  
**a. a lot of**                      b. a few of                      c. few
- +1 4. Q: Have you \_\_\_\_\_ broken your nose? A: No, I haven't.  
**a. ever**                      b. never                      c. always
- +1 5. Q: Have you ever built something? A: Yes. I \_\_\_\_\_ a table.  
**a. have built**                      b. has built                      c. have builded
- +1 6. Q: Do you follow instructions at work? A: Yes. Almost \_\_\_\_\_.  
a. never                      **b. always**                      c. sometimes
- +1 7. I brought my bank statement \_\_\_\_\_ I forgot my pay stub.  
a. , or                      b. . and                      **c. , but**

We encourage you to write the total score at the top of the test and encouraging notes and corrections for your student at the bottom of their test 😊

\_\_\_/14

# 5A Days 1-7 Review Test Score Card

SCORE

Questions 1,2,4: +5 each (+2.5 for correct answer; +2.5 correct grammar and sentence structure)

C. Answer the questions. Write complete sentences.

+5

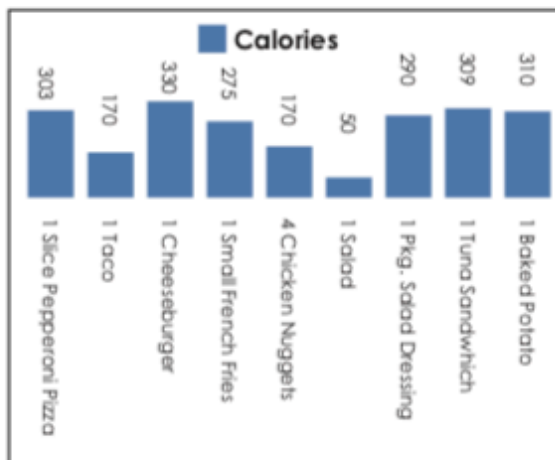
1. What are some of your expenses for English class? \_\_\_\_\_  
**Answers will vary, depending on your program.**

+5

2. Which do you prefer: a desktop or a laptop? **Answers will vary.**

+2

3. Look at the chart. How many calories are in a salad with salad dressing?  
**There are 290 calories.**



+5

4. Answer **one** of these questions:  
 • Have you ever broken a bone?  
 • Have you ever called 911? What happened?

**Answers will vary.**

+14

5. What's the best job you've ever had? Why did you like it?  
**Answers will vary.**

What's the worst job you've ever had? Why didn't you like it?  
**Answers will vary.**

**7 pts. for each line (+4 for correct answer; +3 for correct grammar and sentence structure)**

+2

6. Are you (or someone you know) a good employee? Complete the evaluation form below. Circle **P** (poor), **S** (satisfactory), or **E** (excellent).

signs in / out on time	P	S	E
calls in when sick or running late	P	S	E
follows instructions	P	S	E
has a good attitude about job	P	S	E
turns in paperwork when due	P	S	E
is a problem-solver	P	S	E
dresses appropriately	P	S	E
is a team player	P	S	E

+3

7. What are some of your housing preferences?  
 I'd like **Answers will vary.**

**(+1.5 for correct answer, +1.5 correct grammar and sentence structure)**